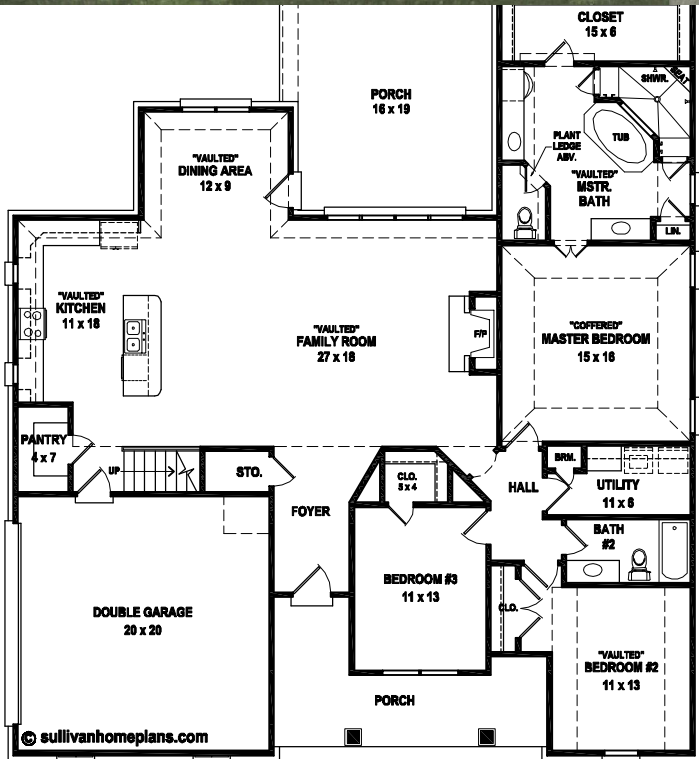


# The Wynbrooke

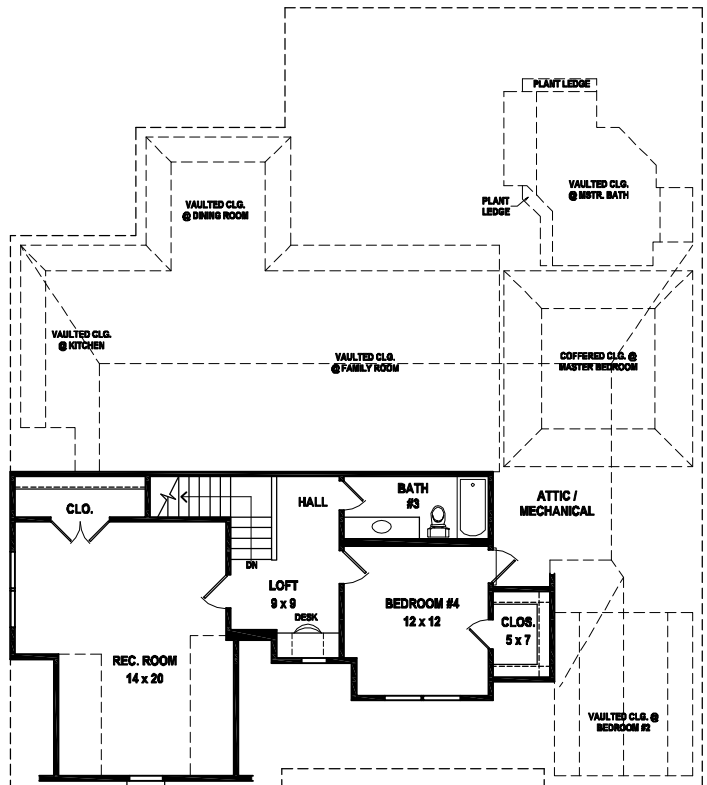


*Photo or Rendering May Not Reflect Changes Made in Field.*



**FIRST LEVEL FLOOR PLAN**

**9'-0" CEILINGS DOWN  
8'-0" CEILINGS UP  
EXCEPT WHERE NOTED  
OTHERWISE ON PLAN**



**SECOND LEVEL FLOOR PLAN**

